

ENCORE

Landscape Lighting



Quick Reference
Catalog



EncoreLandscapeLighting.com
2277 Elliott Drive
Troy, MI 48083
P: 248-299-1919
F: 248-299-1911

EncoreLandscapeLighting@hotmail.com

© 2019 Encore Landscape Lighting

The **Encore Landscape Lighting System™** combined with Encore's superior products will create beauty, safety, and security all in a simple-to-install system. The Encore Landscape Lighting System allows for easy installation of fixtures and transformers while delivering balanced voltage to each fixture, creating a consistent lighting portrait to every project.

The **Encore Perfect Post Path System™** offers the flexibility of interchanging the shades on each path light without replacing the entire fixture allowing for cost effective seasonal design changes.

Table of Contents

BRASS PRODUCTS:

Path and Area Lighting	2
Tiki Torch	6
Bollards	10
Up and Down Lighting.....	14
Inground and Soffit Lighting	18
Well Lights and Inground Lighting	18
Deck and Step Lighting	20
Hardscape and Under The Cap Lighting.....	21
Hanging Lights.....	22
Wall Sconces	22
Accessories.....	23
Underwater Lighting.....	24

ALUMINUM PRODUCTS:

Path and Area Lighting	26
Up and Down Lighting.....	27

COPPER PRODUCTS:

Path and Area Lighting	28
Up Lighting	28

SUPPORT EQUIPMENT AND INFORMATION:

Kelvin Chart	29
Transformers and Accessories.....	30
Lamp Guide	33

Note: All products in this catalog are 12 volt unless noted.

Dare to Compare

- Our exceptional quality and innovative product line uses the finest materials available, including solid brass, copper, stainless steel, and a superior grade of cast aluminum.
- Our innovative fixtures are user friendly and can be adjusted without the use of tools.
- Our lifetime warranty and unsurpassed service is second to none.
- Our state of the art factory and shipping department allow for orders to be processed and shipped the same day.

Encore Landscape Lighting Products are the choice by professionals who require reliable products of superior quality that will last a lifetime.

BRASS



BL-01-B



BL-04



BL-09-F



BL-09-H

BRASS



BL-02



BL-02-B



BL-11



BL-13



BL-05



BL-06



BL-12



BL-12-TREE



BL-07



BL-07-B



BL-14



BL-17



BL-08



BL-10



BL-15



BL-15-TREE



BL-18



BL-18-VG



BL-19



BL-19-VG



BL-61



BL-62



BL-63



BL-64



BL-65



BL-71

Application: Illuminating Pathways, Bed Areas and Driveways
Construction: Cast Brass Shade with Heavy Brass Post
Finish: Antiqued Brass
Wire Lead: 25 Feet of 18-2 Wire
Stake: X-801 Heavy Duty Ground Stake
Lamp: LED: 3 Watt G4 Bi-Pin
Lens: Clear and Frosted Glass Dome
Height: 15", 20" and 24"





MDS-01



MDS-02



MDB-03



MDB-04



MDB-05



MDB-06



MDB-07



TIKI TORCH



Application: Illuminating Pathways, Bed Areas and Driveways

Construction: **MDS-01 and MDS-02:** Stainless Steel in Powder Coat Black

All Others: Cast Brass in Antiqued Brass Color

Finish: Antiqued Brass

Wire Lead: 25 Feet of 18-2 Wire

Stake: X-801 Heavy Duty Ground Stake

Lamp: **LED:** 3 Watt or 4 Watt

Height: 15", 20" and 24"



BL-72-MR8



BL-72-MR11



BL-72-MR16



BL-73



BL-74



BL-75



BL-76



BL-78



BL-78 W/SHROUD



BL-78 W/15" RISER



BL-77-MR8



BL-77-MR11



BL-77-MR16

Application: Illuminating Pathways, Bed Areas and Driveways
BL-77: Down Lighting the Above Areas

Construction: Cast Brass with Solid Brass Post

Finish: Antiqued Brass

Wire Lead: 25 Feet of 18-2 Wire

Stake: X-801 Heavy Duty Ground Stake

Lamp: Various LED Options

Height: 15", 20" and 24"

BRASS



BOL-01



BOL-02



BOL-09



BOL-10



BOL-03



BOL-04



BOL-11



BOL-12

BRASS

ALUMINUM



BOL-05



BOL-06



BOL-13



BOL-14



BOL-07



BOL-08

Application: Illuminating Pathways, Bed Areas and Driveways
Construction: Brass
Finish: Antiqued Brass
Wire Lead: 25 Feet of 18-2 Wire
Stake: X-801 Heavy Duty Ground Stake
Lamp: Various LED Options

BRASS



B0L-202



B0L-202-B



B0L-211



B0L-213



B0L-204



B0L-205



B0L-214



BL-217



B0L-206



B0L-207



B0L-218



B0L-219



B0L-207-B



B0L-208



B0L-262



B0L-264



B0L-209-F



B0L-209-H



B0L-265

BRASS



BL-20



BL-27



BL-23



BL-24



BL-25



BL-25-RGBW-BT



BL-26



BL-26-RGBW-BT



BL-29



BL-29-RGBW-BT

Application: Up or Down Lighting of Trees and Homes
Construction: Solid Cast Brass
Finish: Antiqued Brass
Wire Lead: 25 Feet of 18-2 Wire
Stake: X-800 Heavy Duty Ground Stake
Lamp: LED: 3, 4, 6, or 9 Watt or RGBW Bluetooth





BL-30



BL-31



BL-31-RGBW-BT



BL-32



BL-32-RGBW-BT



WL-25



WL-25-RGBW-BT



Application: Up and Down Lighting of Walls, Signs and Homes
Construction: Cast Brass
Finish: Antiqued Brass
Wire Lead: 25 Feet of 18-2 Wire
Stake: X-801 Heavy Duty Ground Stake
Lamp: Various LED Options and RGBW Bluetooth

BRASS



WL-100



WL-101



WL-102



WL-103



WL-104



WL-105



WL-113



WL-115



WL-116



WL-80



WL-81



WL-83



WL-90



WL-92



WL-94

STAINLESS

COMPOSITE



WL-235-BK-LED



WL-235-LB-LED



WL-335-BK-LED



WL-335-LB-LED



WL-435-BK-LED



WL-435-LB-LED



WL-535-BK-LED



WL-535-LB-LED

Application: Up Lighting
Construction: Brass, Stainless Steel and Composite
Finish: Antiqued Brass, Stainless Steel, Black or Brown
Wire Lead: 25 Feet of 18-2 Wire
Lamp: Various LED Options and RGBW Bluetooth



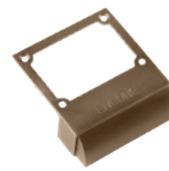
SD-01-BR



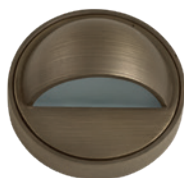
SD-40



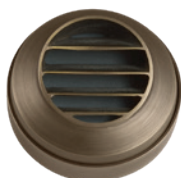
SD-500



SD-501



SD-46



SD-47



SD-505



SD-506



SD-400



SD-401



SD-402

SD-60
Brick Paver Light

SD-02



SD-403



SD-404



SD-405

Application: Illuminating Decks, Steps, Posts, Walls, Docks, and Brick Pavers

Construction: Cast Brass

Finish: Antiqued Brass

Wire Lead: 25 Feet of 18-2 Wire

Lamp: Various LED Lamps



WS-01



WS-02



WS-03



WS-06



WS-04



WS-05



HL-200



HL-201



HL-202



HL-203



VOLTAGE
BALANCER

X-900

WALL MOUNT



X-813

TREE MOUNT



X-815

GUTTER MOUNT



X-818



X-100-BRASS
RING



X-300-BRASS
COVER-BK



X-300-BRASS
COVER-LB



X-820



X-821

RISER EXTENSIONS



X-807-18



X-807-15



X-807-10



X-807-7

ADJUSTABLE
RISER EXTENSIONS



X-807-ADJ-12-22



X-807-ADJ-6-10



UL-54-LED-3W



UL-54-LED-3W-RGB



UL-54-LED-6W



UL-54-LED-6W-RGB



UL-54-LED-9W



UL-54-LED-9W-RGB



UL-55



UL-56



UL-58



UL-59

Application: Underwater Lighting
Construction: Stainless Steel
 Cast Brass
Finish: Stainless Steel
 Natural Brass
Wire Lead: 25 Feet of 16-2 Wire
Lamp: Various LED Options and RGB DMX





AL-02



AL-02-B



AL-05



AL-06



AL-07



AL-07-B



AL-09-F



AL-09-H



AL-10



AL-11



AL-13



AL-14

Application: Illuminating Pathways, Bed Areas and Driveways
Construction: Die Cast Aluminum
Finish: Textured Black
Wire Lead: 25 Feet of 18-2 Wire
Stake: X-801 Heavy Duty Ground Stake
Lamp: LED: 3 Watt G4 Bi-Pin
Height: 20" or 24"



AL-21



AL-26



AL-31

Application: Up or Down Lighting
Construction: Die Cast Aluminum
Finish: Textured Black
Wire Lead: 25 Feet of 18-2 Wire
Stake: X-800 Heavy Duty Ground Stake
Lamp: Various LED Options

COPPER



CL-02



CL-02-B



CL-05



CL-07



CL-07-B



CL-22

Application: Illuminating Pathways, Bed Areas and Driveways, and Up Lighting Trees and Homes

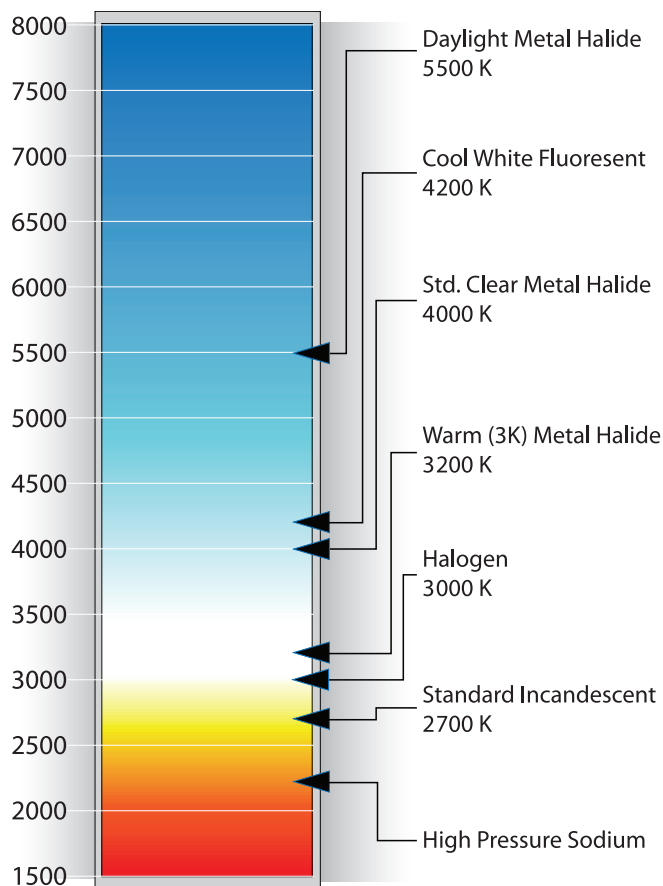
Construction: Copper

Finish: Copper

Wire Lead: 25 Feet of 18-2 Wire

Stake: X-801 Heavy Duty Ground Stake

Lamp: Various LED Options





TR-75SS-15



TR-150SS-15



TR-300SS-15



TR-300SS-22



TR-600SS-15



TR-600SS-22

Construction: 304 Stainless Steel

Taps: 12-15 Volt Transformers are 12, 13, 14 and 15
12-22 Volt Transformers are 12, 13, 14, 15, 16, 17, 18, 20 and 22

Primary Protection: Automatic thermal reset breaker

Secondary Protection: 25 amp, 300 watt magnetic breaker with reset switch

Torodial Core: Epoxy sealed core which is silent and up to 10% more efficient, runs much cooler than laminated cores

Terminal: Extra large 125 amp terminal blocks, holds (8) 12/2 wire

Internal Wiring: Non-corrosive, tin coated marine grade, dedicated current loop to measure primary amperage

Timer Receptacle: Standard receptacle for plug and play options

Photo Cell Plug: Dedicated plug for easy installation of photo cell

Child Proof Safety: Lockable attached door to prevent access

Model	Volts	Wattage	Max Amps	Dimensions (L x W x D)	Weight
TR-75SS-15	12, 15	75 watts	.625A	6.5" x 3.75" x 4.5"	8lbs
TR-150SS-15	12, 13, 14, 15	150 watts	1.25A	10.5" x 5.75" x 4.5"	13lbs
TR-300SS-15	12, 13, 14, 15	300 watts	2.5A	16.25" x 6" x 5.5"	24lbs
TR-600SS-15	12, 13, 14, 15	600 watts	5.0A	16.25" x 6" x 5.5"	30lbs
TR-300SS-22	12, 13, 14, 15, 16, 17, 18, 22	300 watts	2.5A	16.25" x 6" x 5.5"	26lbs
TR-600SS-22	12, 13, 14, 15, 16, 17, 18, 22	600 watts	5.0A	16.25" x 6" x 5.5"	32lbs
TR-900SS-22	12, 13, 14, 15, 16, 17, 18, 20, 22	900 watts	7.5A	17.25" x 7.75" x 7"	48lbs
TR-1200SS-22	12, 13, 14, 15, 16, 17, 18, 20, 22	1200 watts	10A	17.25" x 7.75" x 7"	51lbs



X-TM



X-TM-DM




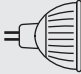
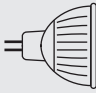
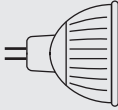

X-PC



XP-PC-25



X-TM-ASTRO

Lamp Type	Part Number	Watts	Volts	Beam Spread	Base	Lumens/CBCP	Color Temp	Rated Life (Hours)
LED T3 	LA-LED-T3-25-1W-3000	1	12	–	G4 Bi-Pin	90	3000	40,000
	LA-LED-T3-13-2W-3000	2	12	–	G4 Bi-Pin	180	3000	40,000
	LA-LED-T3-18-3W-3000	3	12	–	G4 Bi-Pin	240	3000	40,000
	LA-LED-T3-27-4W-3000	4	12	–	G4 Bi-Pin	360	3000	40,000
LED MR8 	LA-LED-MR8-3W-2700	3	12	60°	GU4 Bi-Pin	160	2700	40,000
	LA-LED-MR8-3W-3000	3	12	60°	GU4 Bi-Pin	200	3000	40,000
LED MR11 	LA-LED-MR11-3W-2700	3	12	40°	GU4 Bi-Pin	180	2700	40,000
	LA-LED-MR11-3W-3000	3	12	40°	GU4 Bi-Pin	220	3000	40,000
LED MR16 	LA-LED-MR16-4W-2700-15	4	12	15°	GU5.3 Bi-Pin	240	2700	40,000
	LA-LED-MR16-4W-2700-30	4	12	30°	GU5.3 Bi-Pin	240	2700	40,000
	LA-LED-MR16-4W-2700-45	4	12	45°	GU5.3 Bi-Pin	240	2700	40,000
	LA-LED-MR16-4W-2700-60	4	12	60°	GU5.3 Bi-Pin	240	2700	40,000
	LA-LED-MR16-4W-3000-15	4	12	15°	GU5.3 Bi-Pin	260	3000	40,000
	LA-LED-MR16-4W-3000-30	4	12	30°	GU5.3 Bi-Pin	260	3000	40,000
	LA-LED-MR16-4W-3000-45	4	12	45°	GU5.3 Bi-Pin	260	3000	40,000
	LA-LED-MR16-4W-3000-60	4	12	60°	GU5.3 Bi-Pin	260	3000	40,000
	LA-LED-MR16-6W-2700-15	6	12	15°	GU5.3 Bi-Pin	450	2700	40,000
	LA-LED-MR16-6W-2700-30	6	12	30°	GU5.3 Bi-Pin	450	2700	40,000
	LA-LED-MR16-6W-2700-45	6	12	45°	GU5.3 Bi-Pin	450	2700	40,000
	LA-LED-MR16-6W-2700-60	6	12	60°	GU5.3 Bi-Pin	450	2700	40,000
	LA-LED-MR16-6W-3000-15	6	12	15°	GU5.3 Bi-Pin	470	3000	40,000
	LA-LED-MR16-6W-3000-30	6	12	30°	GU5.3 Bi-Pin	470	3000	40,000
	LA-LED-MR16-6W-3000-45	6	12	45°	GU5.3 Bi-Pin	470	3000	40,000
	LA-LED-MR16-6W-3000-60	6	12	60°	GU5.3 Bi-Pin	470	3000	40,000
	LA-LED-MR16-9W-2700-45	9	12	15°	GU5.3 Bi-Pin	560	2700	40,000
	LA-LED-MR16-9W-2700-60	9	12	30°	GU5.3 Bi-Pin	560	2700	40,000
	LA-LED-MR16-9W-3000-45	9	12	45°	GU5.3 Bi-Pin	580	3000	40,000
	LA-LED-MR16-9W-3000-60	9	12	60°	GU5.3 Bi-Pin	580	3000	40,000
LED PAR 36 	LA-LED-PAR36-6W-2700-40	6	12	40°	Screw Terminal	460	2700	40,000
	LA-LED-PAR36-6W-3000-40	6	12	40°	Screw Terminal	480	3000	40,000
	LA-LED-PAR36-10W-2700-40	10	12	40°	Screw Terminal	600	2700	40,000
	LA-LED-PAR36-10W-3000-40	10	12	40°	Screw Terminal	620	3000	40,000
	LA-LED-PAR36-13W-2700-40	13	12	40°	Screw Terminal	800	2700	40,000
	LA-LED-PAR36-13W-3000-40	13	12	40°	Screw Terminal	820	3000	40,000
	LA-LED-PAR36-17W-2700-40	17	12	40°	Screw Terminal	930	2700	40,000
	LA-LED-PAR36-17W-3000-40	17	12	40°	Screw Terminal	960	3000	40,000



EncoreLandscapeLighting.com
2277 Elliott Drive
Troy, MI 48083
P: 248-299-1919
F: 248-299-1911

EncoreLandscapeLighting@hotmail.com

© 2019 Encore Landscape Lighting