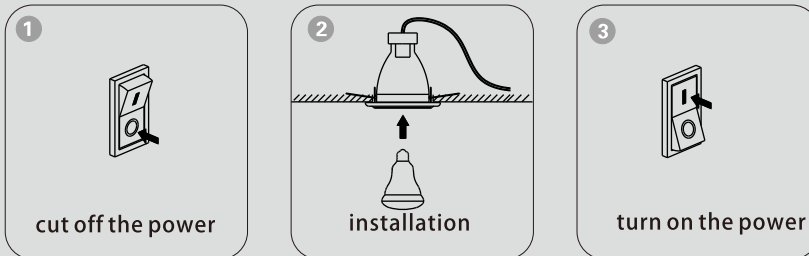


Bluetooth APP Instruction (iOS version)

1. Installation of the lamp

Please cut off the power before installation.



2. Instruction of the Application

2.1 Install and operate for the first time

Before using the app, please find and turn on the built-in Bluetooth of phone at first, then click the "Encore" icon.

► Two ways to get the APP:

1. Searching keyword "EncoreLighting"(No Spaces) in App Store, download it & install to use.

Install condition: The app is suitable for iphone 4S and above models, iOS 9.0 and above.

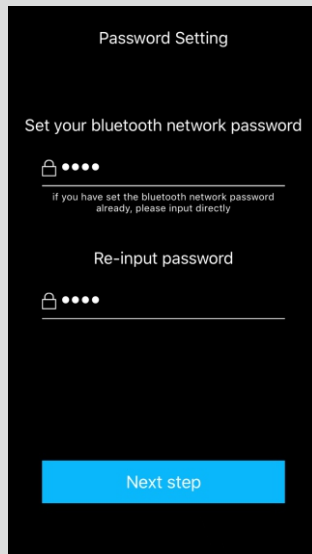
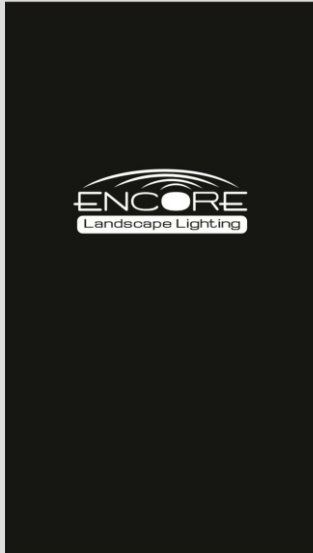
► Tips:

1. Before operating the app, please make sure the lamp is under the factory setting status.

2. After powering on, the lamp which is under the factory setting status , getting bright and dark cyclically is normal.

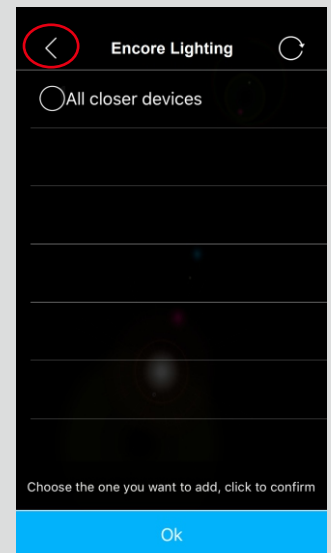
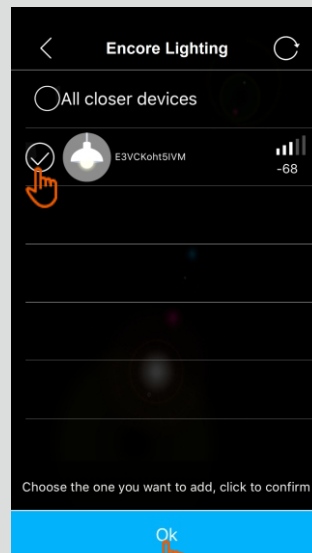
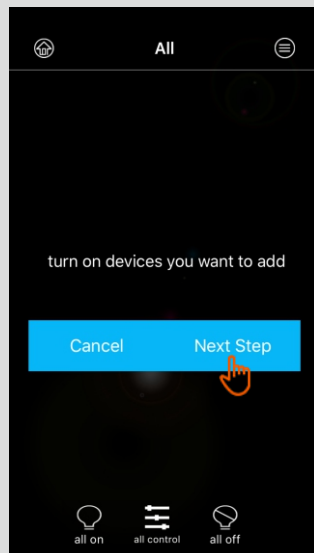
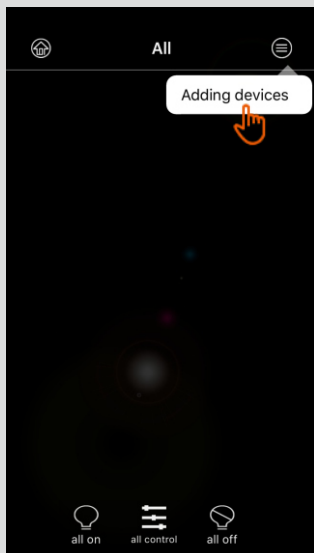
2.2 Create a password

▶ Open the APP, According to the prompt to create a password.



2.3 Add in equipment

- ▶ Click on the "☰" , choose "Adding Devices" , then will popup dialogs "turn on devices you want to add" , then choose " Next Step" .
- ▶ Click circle to choose lamps need add in (7 pieces selected lamps can be add in at a time, more lamp need to repeat this step), then click "OK" .
- ▶ Click "◀" , return to lighting control interface.

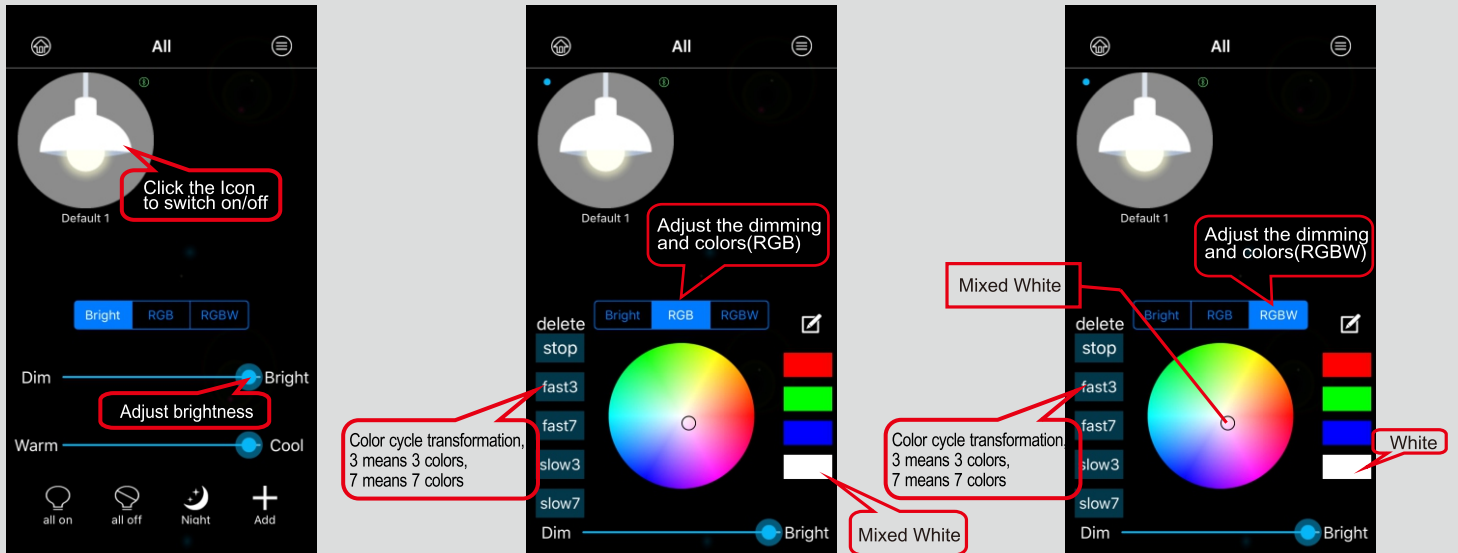


2.4 Control equipment

1 single lamp control

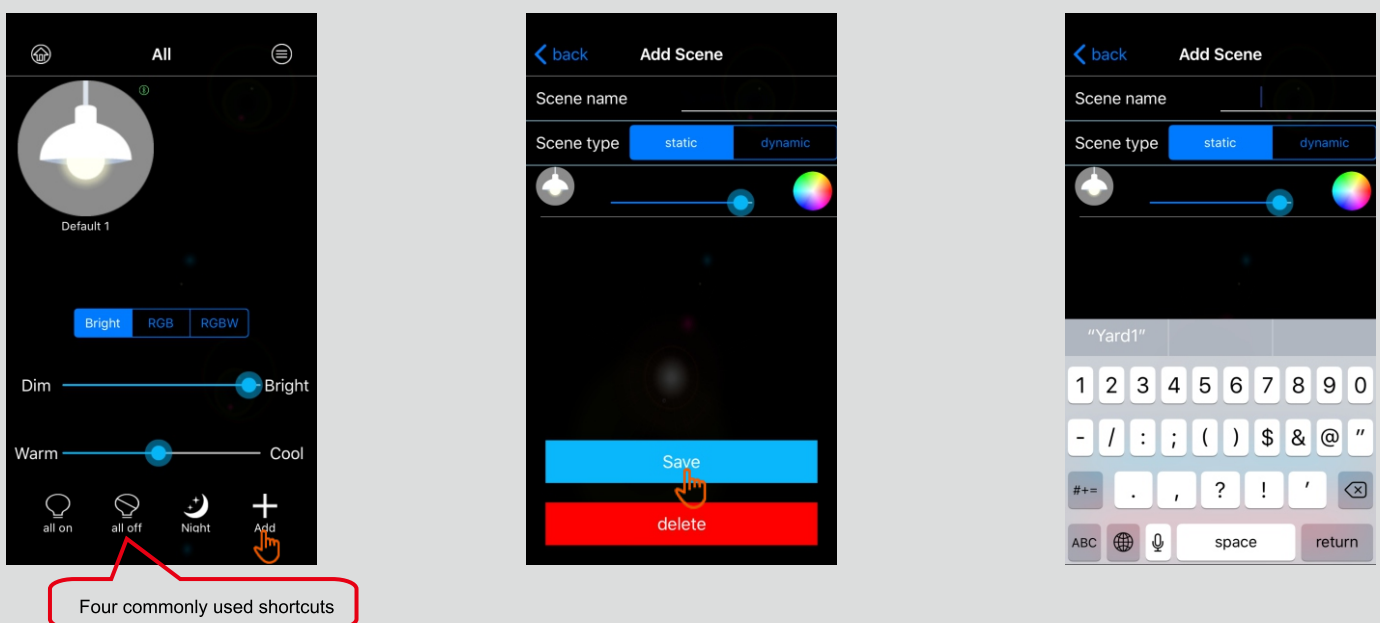
- ▶ Click the Icon to switch on/off.
- ▶ Long press equipment icon to get the control panel for lamp control.
- ▶ Tap blank area can hide the lamp control panel.

A According to the type of equipment, adjust the brightness, color temperature and colors.

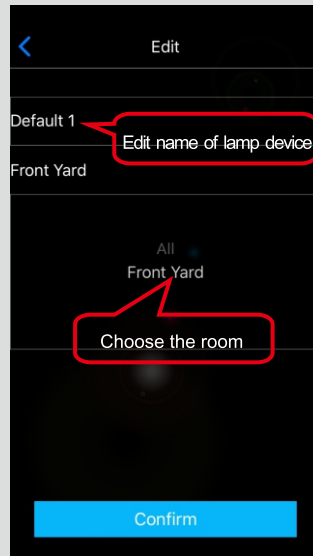
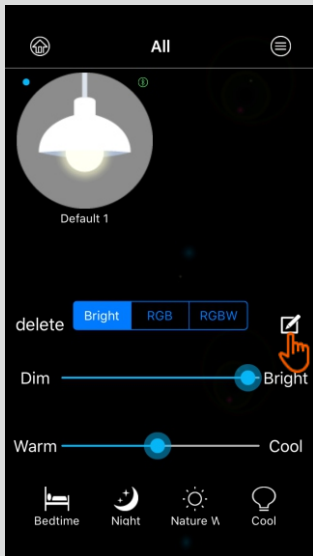



B When adjust brightness and color temperature , you can use a button to achieve common sight switch.

- ▶ Click " + " adjust your favorite brightness & color, click " Save " , input scene name, click " OK " .



C Edit equipment name, select room(Location).



▶ Click  on control panel , the you can choose new room again.

▶ Explain: after choosing the room (group) again, the equipment will flash several times as a reminder.

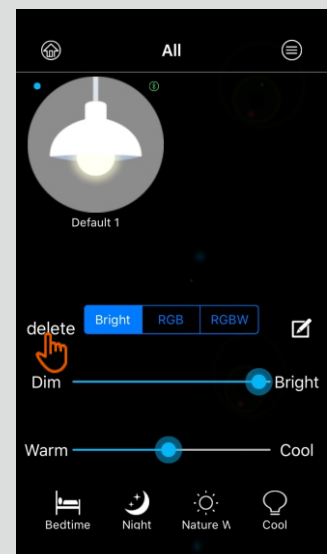
D Delete the equipment.

▶ Click "delete" , according to reminder to delete the chosen equipment.

Explain:

▶ 1. After you use APP control, you must delete the added lighting to make it back to factory setting status. If not, the new users cannot add lamp in.

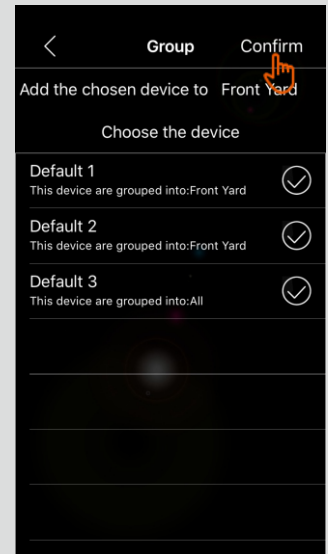
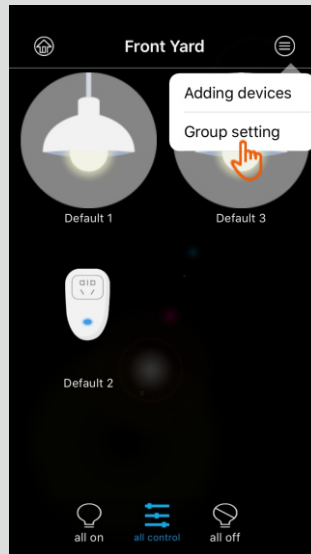
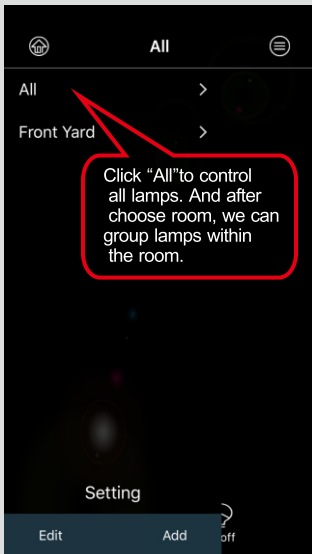
▶ 2. If you delete successfully, then the equipment will flash several times as a reminder.



2 Totally control and to group

▶ Click "All" to control all lamps. And after choose room, we can group lamps within the room.

▶ Click "Group setting", chose your target lamp, and then click "Confirm" to finish grouping.



3 Adding or deleting room(group)

A Adding room

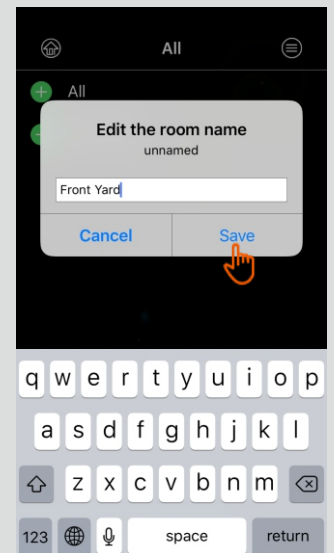
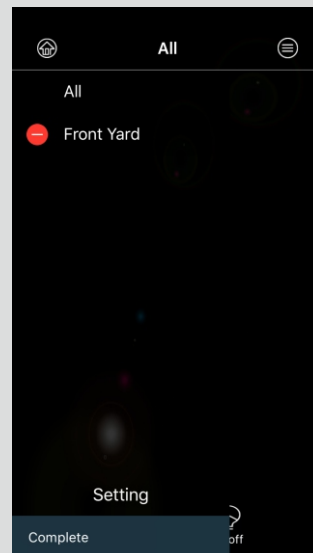
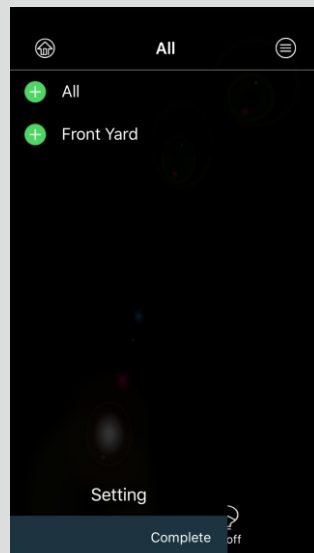
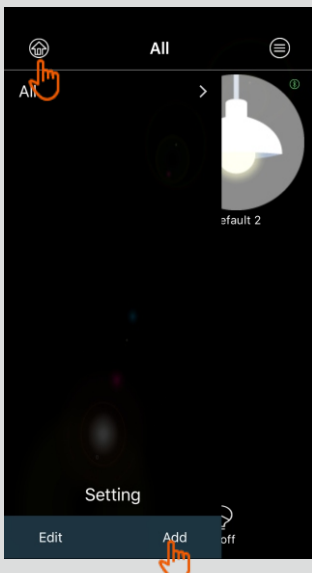
Click to choose "Add", then click add new room, then click "Complete" for confirming.

B Delete rooms

Click to choose "Edit", then click delete this room, after that, click "Complete" for confirming.

C Rename the room


Click to choose "Add" or "Edit", then click the name of room, then according to the reminder to complete rename.




4 Upload/download configuration information

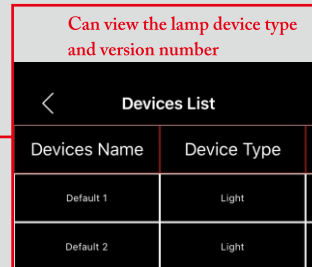
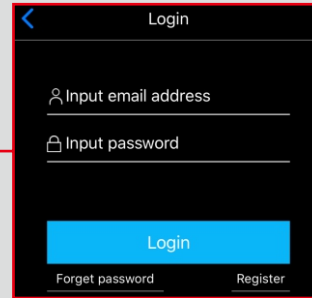
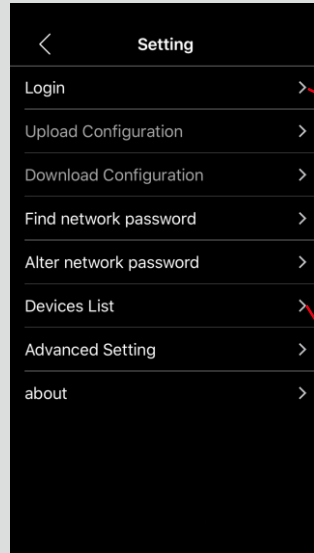
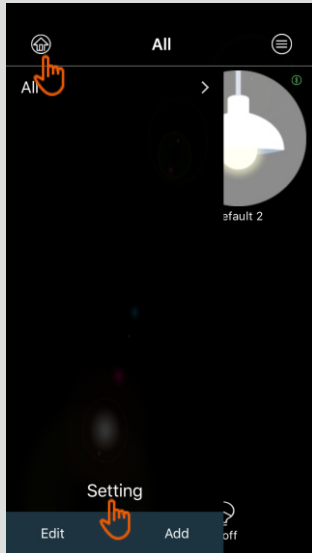
▶ Click , select " Setting " , then register and log in to upload/download the configuration information.

5 Retrieve password

▶ Click , select " Setting " , then click " Find Network Password " .

6 Devices

▶ Click , select " Setting " , then click " Devices List " .



Thank you for purchasing our bluetooth dimmable led light, in order to make this product to be used at its best, please read and follow the instructions, install correctly and use safely. Also keep the instructions brochure in case for future reference. If functional upgrading causes that the content described in the instructions brochure does not meet the actual product, please be subject to the company information publicized subsequently. If there is typo or discrepancies with the latest information, we'll improve timely and incorporate into the updated instructions without notice in advance, our company reserves the final right to interpret.